

Park Perspective

Winter 2025

www.stlouisparkmn.gov



Snow emergencies, winter parking and shoveling reminders on page 6.

Inside this newsletter

- Property taxes and 2026 preliminary levy 2
- An inside look at fire department training 3
- Home ownership assistance 4
- Zoning code survey results 5
- Name-a-Snowplow contest winner 6
- Winter collection service schedules 7
- BundledUp! and winter events 8

This is the official city newsletter of the City of St. Louis Park. It's printed on 30% post-consumer recycled paper in an effort to meet the city's environmentally preferable purchasing policy.

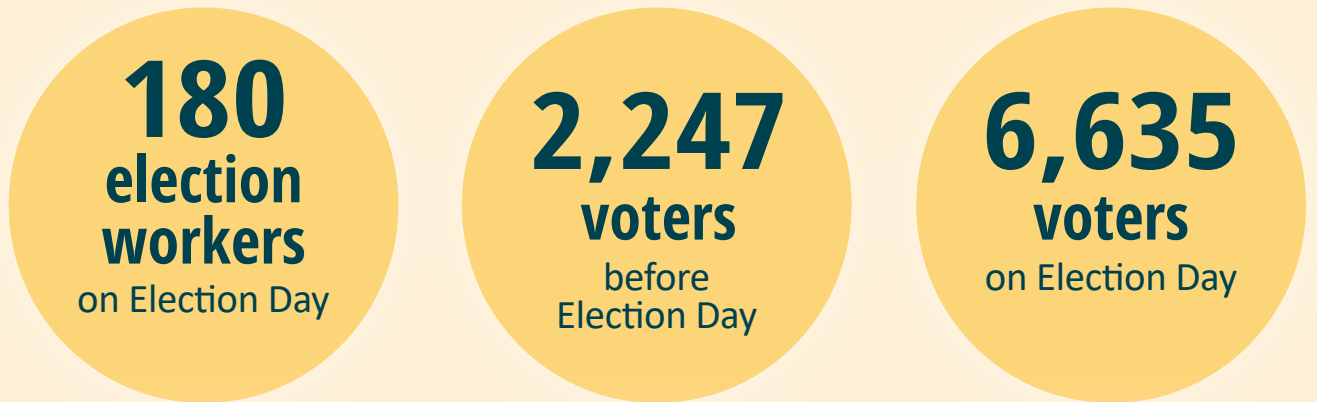
PRSR-T STD
U.S. Postage
PAID
Twin Cities, MN
Permit No. 603



General election results

elections@stlouisparkmn.gov | 952.924.2503 | www.stlouisparkmn.gov/vote

Thank you St. Louis Park voters for turning out in impressive numbers for the Nov. 4 general election, and to our dedicated election workers whose efforts helped ensure a smooth and successful election process. Daniel Bashore (ward 1), Jim Engelking (ward 2), Sue Budd (ward 3) and Tim Brausen (ward 4) will be sworn into four-year terms on the city council at the Jan. 5 city council meeting. For more about elections and voting, visit www.stlouisparkmn.gov/vote.



Understanding property taxes, 2026 levy

Levy proposed to be reduced from original projection

Property taxes are a vital funding source for local services provided by cities, counties, school districts and other special districts. They fund streets and utility maintenance, public safety and emergency response, parks and recreation, water and sewer services, election coordination, solid waste management, capital improvements, redevelopment investments, public education, courts, libraries, community events and more.

Unlike sales or income taxes, which can vary, the property tax is an exact levy to fund capital and operating budgets. City budgets are determined each year by city staff and elected officials with the help of public input.

Your property tax dollar is divided among several taxing entities. For every dollar paid in 2025, about 33 cents go to city services, 34 cents go to St. Louis Park Public Schools, and 27 cents go to Hennepin County, with the remainder split among other special taxing districts.

Continued on page 2.



NOW HIRING!

Experience LIFE in the Park

as a City of St. Louis Park paid intern or full-time employee!

Visit www.stlouisparkmn.gov/employment or scan the QR code today!



Stay informed


To talk to someone in person, visit city hall at 5005 Minnetonka Blvd., during business hours, Monday – Friday, 8 a.m. – 4:30 p.m. Can't make it out? Call the main number during business hours at 952.924.2500 or try one of our many online resources.

For city events, activities, schedules and news updates, visit www.stlouisparkmn.gov, sign up for text and email notifications through govDelivery, or follow us on social media.

For reasonable accommodations or alternative formats please contact the communications division at 952.924.2500 or info@stlouisparkmn.gov. People who are deaf or hard of hearing can call 952.924.2518 for a relay service. Para ayuda, llame al 952.924.2500. Hadii aad caawimaad u baahantahay, wac 952.924.2500.






 govDelivery www.stlouisparkmn.gov/sign-up

-  @stlouispark
-  @stlouisparkmn
-  @stlouispark
-  www.nextdoor.com
-  www.youtube.com/slpcable

Make service requests or receive city information via the app  or visit www.mystlouispark.org.

St. Louis Park's strategic priorities

Below are the five guiding leadership priorities of the City of St. Louis Park and city council as selected through the community Vision 3.0 process.

-  Being a leader in racial equity and inclusion in order to create a more just and inclusive community for all.
-  Continuing to lead in environmental stewardship.
-  Providing a broad range of housing and neighborhood-oriented development.
-  Providing a variety of options for people to make their way around the city comfortably, safely and reliably.
-  Creating opportunities to build social capital through community engagement.

Visit www.stlouisparkmn.gov/our-city/about-us to learn more.

Submit for neighborhood grants before the end of the year

There's still time to register your neighborhood and request funding through the Neighborhood Grant Program. This program offers equity-based funding to neighborhoods for special projects and events. The city is still accepting grant requests through the end of the year for funding that must be spent in 2025. The 2026 grant cycle will open Jan. 1. Additionally, the annual neighborhood training meeting will be held Jan. 22, 2026. To learn more and submit a grant request, visit www.stlouisparkmn.gov/neighborhoods.



Continued from page 1.

Property taxes and 2026 preliminary levy increase explained

On Dec. 15, the St. Louis Park City Council is scheduled to approve a 2026 budget and final property tax levy increase. **While the preliminary levy increase was set at 8.02% in September, in November city council directed staff to lower the increase to 7.49%.** Council also decertified tax-increment finance districts after the preliminary levy was adopted, which increases the overall tax base and reduces taxing impact on any one taxpayer. Both of these decisions will result in property tax increases less than what residents will see on their Truth-in-Taxation notice.

The median value home is now estimated to see a \$154 annual property tax increase in 2026. **By law, the final levy increase approved by council may be lower than the preliminary levy, but not higher.**

Drop in commercial values shifts tax burden

Steady growth in residential values combined with falling values in commercial buildings, particularly office buildings, is shifting more tax burden onto residential property owners.

From 2025 to 2026, declines in commercial property values reduced their total tax capacity by 2%, while residential property tax capacity (including apartments) increased by 0.38%. That disproportionate shift in value is the single largest factor impacting the 2026 tax levy increase for residents.

Property taxes are determined by the tax capacity of a given building. A building's tax capacity is determined both by its taxable market value and its usage. Due to their income-generating potential, commercial properties are taxed at a higher rate than residential homesteads.

Visit www.stlouisparkmn.gov/finance for more details.

2026 preliminary levy increases from a sample of nearby suburbs

Apple Valley	13%	Hopkins	7.98%
Roseville	12%	Minnetonka	7.9%
Edina	11.03%	Burnsville	7.4%
Rosemount	9.8%	Plymouth	7.3%
Columbia Heights	9.2%	Eden Prairie	5.6%
Eagan	8.9%	New Hope	4.9%
St. Louis Park	8.02%*	Golden Valley	4.4%

**May be adjusted down to 7.49%. See article above for more details.*



Human Rights Award nominations open in January

Each year, the St. Louis Park Human Rights Commission honors individuals, organizations and businesses that help build a more just, inclusive and equitable community. The Human Rights Award recognizes those who go above and beyond to foster understanding and cooperation across diverse backgrounds. Who will be recognized next? Whether through advocacy, education, outreach or everyday acts of compassion, these efforts matter. You can spotlight the changemakers among us when nominations open Jan. 6, 2026.



An inside look at St. Louis Park Fire Department training

From water rescues to custom-built obstacle courses, St. Louis Park firefighters are constantly honing their skills through a variety of monthly trainings.

Most trainings are developed by St. Louis Park firefighters who draw on their experiences and the city's unique needs. Their scenarios incorporate the tools and techniques required in real-life fire and public safety emergencies of all kinds.

"Continuous training is the basis of firefighter safety and effectiveness," says Training Chief Beaux Beauvais. "Fires, medical calls and other situations evolve quickly, so our people must constantly practice modern tactics and decision making until they're second nature."

"Ongoing drills build muscle memory, reinforce good

communication and ensure all of our crews operate cohesively," Beauvais says. "This preparation protects our firefighters on-scene, and it directly safeguards those who call St. Louis Park home."

A standout training this year was a high-rise simulation, where firefighters were able to replicate the conditions of a fire in an empty office building. They also complete an annual confidence training to ensure everyone is comfortable and competent in demanding situations like navigating tight spaces, low visibility and heavy gear while still working effectively as a team.

Want to see our firefighter trainings in action? Explore the city's video series that offers a unique behind-the-scenes look at some of these trainings at bit.ly/fire_training_videos.



Scan to watch video recaps of fire trainings.



Be a Hydrant Hero

The St. Louis Park Fire Department asks homeowners and businesses with fire hydrants on or near their property to shovel the snow around the fire hydrant after each snowfall. This small act can save lives! When there's a fire, firefighters have only seconds to spare. A hydrant buried in snow is not easily accessible and can delay response time. Visit www.hydranthero.org to adopt a hydrant. Choose a hydrant, click on the "Adopt me" link and fill out the registration form. You can even give your hydrant a name! Call 952.924.2171 for more information.



Don't get "taxed" by scammers this season

Tax season is prime time for scammers who impersonate representatives from the IRS. These imposters often use phone calls, emails, texts or messages on social media to trick individuals into giving up money or personal information. They'll try to create a sense of urgency to make you panic and act before you have time to think.

The IRS will never: threaten arrest, require specific payment methods such as gift cards or wire transfers, ask for credit card numbers over the phone, reach out via email or social media to request personal information, or demand immediate payment without first sending a bill in the mail.

Stay alert this tax season. A little caution can go a long way in keeping your identity and finances safe. If you do receive IRS correspondence that appears to be suspect, follow these steps:

- Stop and think! If something sounds too good to be true, it probably is. Trust your instincts, and don't hesitate to stop communicating if something feels off.
- Avoid clicking on any links in messages or emails, and do not copy and paste URLs into your browser.
- Never send money or share any financial or personal information.
- Discuss any correspondence you receive with others, especially your tax preparer.
- If you genuinely believe you owe taxes or have an issue with your tax return, visit the IRS website at [IRS.gov](https://www.irs.gov) or call 1.800.829.1040 for assistance.

If you are a victim of a scam, report it to the St. Louis Park Police Department at 952.924.2600 or online at bit.ly/SLP_police_reports.



Down payment assistance and first-generation homeowner programs help new buyers

Homeownership could be in reach for you. The city offers assistance to both first-time and first-generation buyers.

First-generation ownership assistance

Are you looking to buy a home, and you AND your parent(s) have never owned a home? If so, you would be eligible for the city's first-generation homebuyer program. The program is designed to help first-generation buyers become homeowners and build generational wealth. The loan is a 0% interest, forgivable loan. The maximum loan amount is based on the homebuyers' income and purchase price of the home with a maximum assistance of \$75,000. Income restrictions apply.

First-time homebuyers assistance

Down payment and closing cost assistance is offered to first-time homebuyers or those who have not owned a home in the last three years.

The city provides 0% interest deferred loans of up to \$15,000, not to exceed 5% of the purchase price. An additional \$5,000 is available to employees of St. Louis Park businesses and current renters. Income restrictions apply.

Visit bit.ly/SLPhomeownership for more information. The Center for Energy and Environment (CEE) is the loan administrator for these programs. You can contact CEE directly at 612.335.5884 or mncee.org.

Get help with your energy bills this winter

The state Energy Assistance Program can help pay your gas and electricity bills between Oct. 1, 2025 and May 31, 2026. St. Louis Park households that are income-qualified can apply to receive a grant paid directly to Xcel Energy or CenterPoint Energy. Apply for the Energy Assistance Program with Community Action Partnership of Hennepin County at bit.ly/SLP_weather-help.

After enrolling in the Energy Assistance Program, you may be eligible for FREE home weatherization assistance, which may include insulation installation, furnace repair or replacement, water heater replacement and solar panels.

Free energy assessments for organizations and businesses

Over 50 local organizations and businesses have received a free energy assessment through St. Louis Park's Climate Champions program! Many of them then upgraded to LED lighting or replaced aging HVAC equipment. Thanks to utility rebates and the city's Climate Champions cost share, they were also able to offset much of the cost. If you own a local business, are involved with a local nonprofit or just want to spread the word to your favorite local spots, visit www.stlouisparkmn.gov/climate-champions.

DEPARTMENT SPOTLIGHT: public works

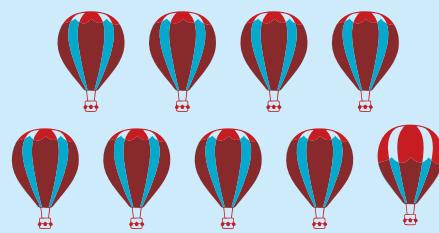
Whether you're driving to work or turning on the tap, you experience the impact of our public works department daily. Made up of three divisions, their behind-the-scenes efforts keep the city connected and clean.

Depending on the time of year, you'll see the **operations division** plowing snow, repairing potholes, sweeping debris from streets, putting up street signs, monitoring traffic signal systems and collecting GPS coordinates of city assets like signs and hydrants. The **utilities division** fixes water main breaks, repairs catch basins and manholes, cleans sewer mains, maintains the city's 35 lift stations and takes water samples throughout the city. The **solid waste division** provides curbside solid waste collection for single-family residential properties, ensures apartment buildings and businesses have recycling service, and hosts events like city cleanup days, swaps, paper shreadings and Recycling Champions trainings.

This public works spotlight is the third in a series that highlights the work and responsibilities of the nine St. Louis Park city departments.

5,000,000
gallons of water

were treated per day throughout the city's six water treatment plants in 2024, with the highest single-day production being 8.7 million.



The amount of water the city treats daily could fill over eight hot air balloons, holding 580,000 gallons each!

2,800
pounds

of clothing, books, games and gardening tools through the city's 2025 swap events. Find the 2026 swap schedule at www.stlouisparkmn.gov/reuse.

1,240,000
pounds

of food scraps and other compostable material kept out of the trash

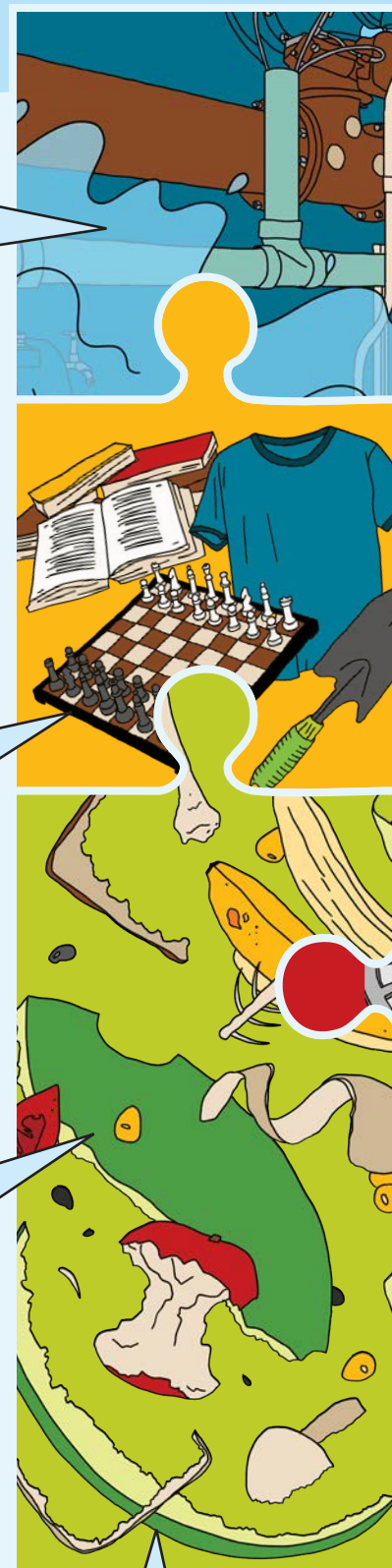
through the city's curbside and multifamily organics drop-site programs in 2024.



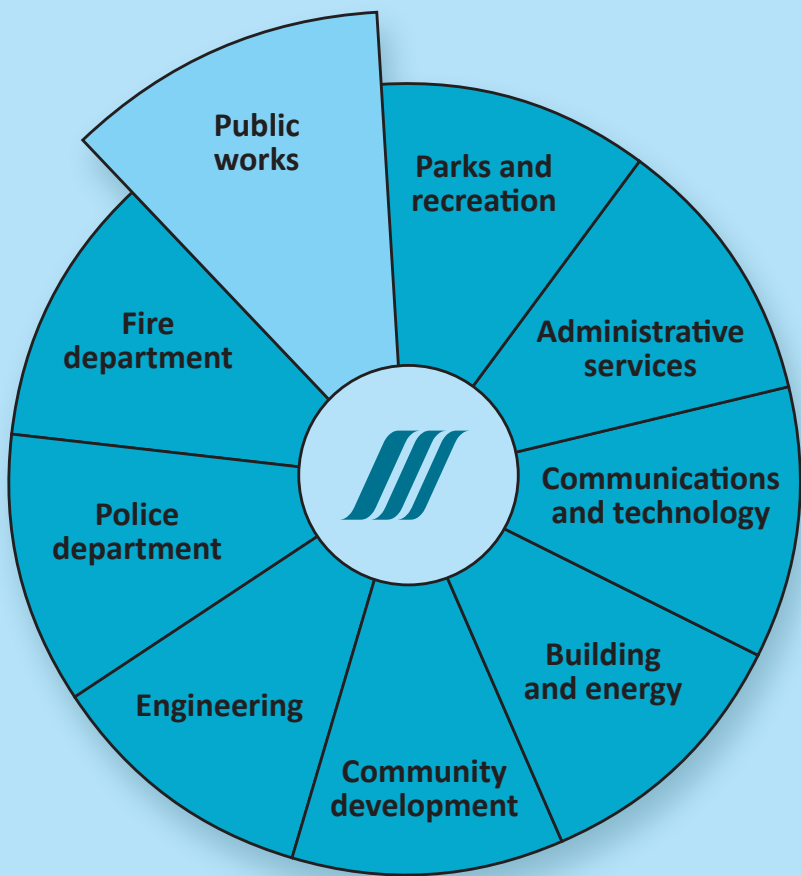
That's equal to the weight of over five blue whales at 230,000 pounds each!

6,113
households

are signed up to participate in the city's organics programs — yours could be next! To sign up, scan the QR code or visit www.stlouisparkmn.gov



Learn more: www.stlouisparkmn.gov/public-works



Zoning code update – phase 2

Survey results and input opportunities

The city is exploring more changes to the zoning code. Earlier this year, St. Louis Park zoning officials surveyed community members about issues that zoning influences, such as the types of uses, size of buildings and amount of parking required in the city’s business districts. The results have been tabulated and are available on the city website. Here is just a sample of what responders said:



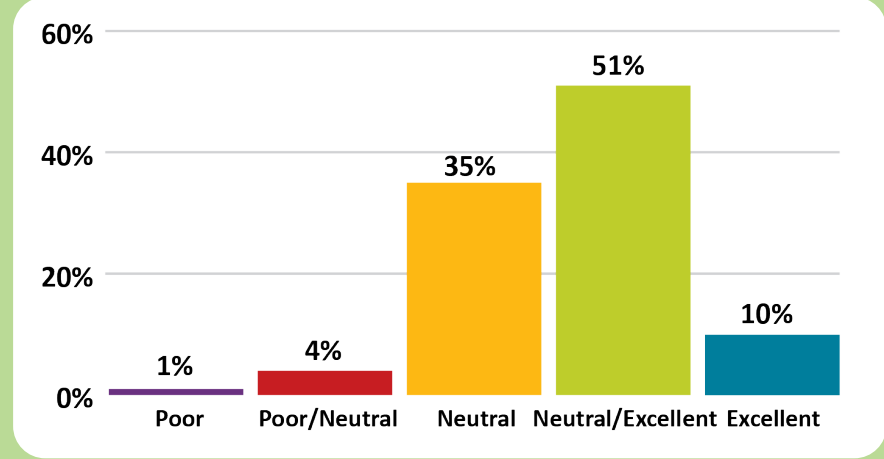
7,000 gallons of water used by the average household in the three-month winter billing quarter, costing **\$69.95**.
If you bought that same amount in one-liter Aquafina bottles, it would add up to **\$94,529!**

1,431 miles of streets were swept in 2024, picking up 6,110 cubic yards of debris.

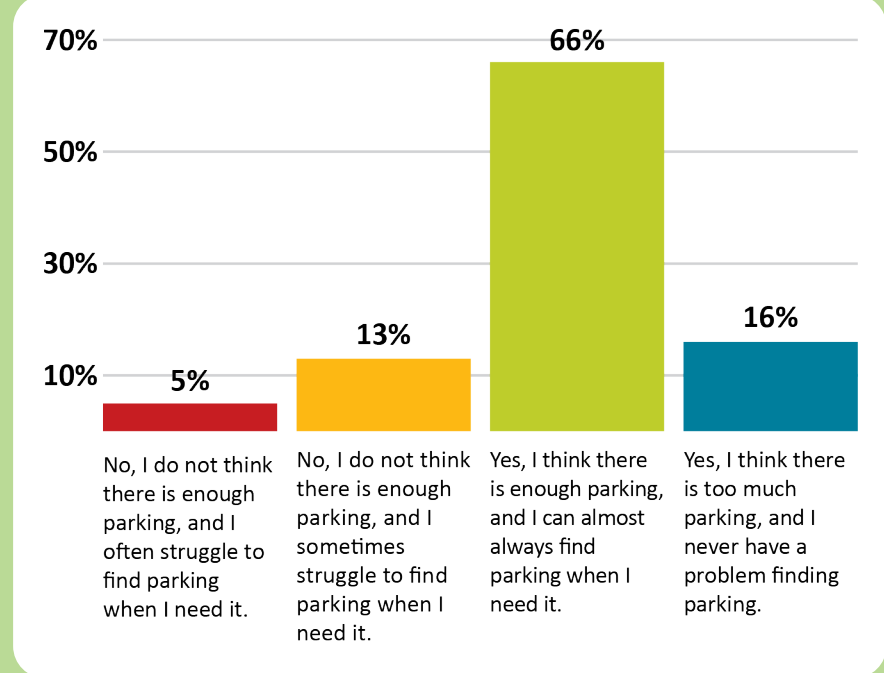
Public works maintains:

- 159.2** miles of water mains
- 102.7** miles of storm sewer
- 136.6** miles of sanitary sewer
- 116** miles of sidewalks
- 2,014** streetlights

stlouisparkmn.gov/orgamics



When asked about their experience in small commercial hubs, like the Texa-Tonka Shopping Center, 61% of respondents rated their experience as good to excellent.



When asked about parking availability, 66% of respondents felt that there was enough parking in small commercial hubs.

Visit the project website to see the full survey results and learn more about the phase 2 zoning code updates at bit.ly/zoning-code-phase-2.

Upcoming engagement opportunities

Staff will be available throughout the next phase of community engagement to answer questions by phone or email. Here is a timeline of upcoming engagement opportunities:

- **December – January:** Watch a short video on the project website that summarizes the proposed updates. Leave comments or questions online, by phone or email to city staff.
- **Thursday, Jan. 8, noon – 1 p.m.:** Join a virtual question and answer session. A link to the meeting will be posted on the project webpage and sent to those that sign up for updates.
- **Wednesday, Jan. 14, 3 – 5 p.m. and 6 – 8 p.m.:** Attend an in-person open house at city hall.



The winner of 2025's snowplow naming contest Dorothy Smith (left) and family posed this November with the freshly labeled snowplow Clearopathra.

And the winner of the snowplow naming contest is...Clearopathra

City staff narrowed down 128 creative snowplow name submissions to their top 10, which were put to a vote on the city's website and social media pages in October. Your staggering 694 votes have been tallied! The winning name of the 2025 St. Louis Park snowplow naming contest is "Clearopathra," submitted by resident Dorothy Smith.

"I entered the contest because I was interested in how the local government is engaging the community and because I enjoy reading all the humorous names!" Smith said.

The winning name was applied to the side of a city snowplow and the winner and friends were able to ride in the plow and take a tour of the Municipal Service Center. The residents who submitted the other top 10 names were also invited to the celebration. This was the city's third snowplow naming contest. Last year's winner went to CTRL + SALT + DELETE, submitted by Sarah Fiedler. The next snowplow naming contest will be held in fall 2026.

Smart salting

Did you know that 1 teaspoon of salt pollutes 5 gallons of water forever? Too much salt harms plants and animals, contaminates drinking water, damages buildings, and corrodes vehicles, roads and bridges.

Actions you can take at home when managing snow and ice this winter:

- Shovel as soon as possible after a snowstorm to prevent ice buildup.
- Add an ice scraper to your toolbox. These are often more effective than salt when ice has built up on sidewalks and driveways.
- Read the label on your deicer to make sure it will properly work in the current weather conditions. At low temperatures, typically colder than 15 degrees Fahrenheit, regular road salt will not melt ice. Use sand or grit for traction when temperatures are too cold for salt to work.
- Use salt sparingly. Generally, aim to have salt granules dispersed 3 inches apart. A coffee mug full of salt (about 12 ounces) is all you need for a 20-foot driveway or 10 sidewalk squares (roughly 1,000 square feet). Make sure to sweep up any extra salt visible on dry pavement.

You can attend a smart salting training from the Minnesota Pollution Control Agency to learn more. Register for a class at bit.ly/smart-salting-trainings.

Be in the s-know about snow emergencies

- Visit www.stlouisparkmn.gov/snow to:
 - Get the latest news on snow emergencies
 - Sign up for ParkAlert, the city's citizen notification system
 - Sign up for govDelivery email and text notifications for snow emergencies and other events
 - Stream ParkTV
- Call 952.230.0743 for updates.
- Download the mystlouispark app for Apple or Android devices. The app will display an alert when a snow emergency is in effect.
- Follow the city's social media sites on Facebook, Instagram and Nextdoor.
- Watch ParkTV on Comcast standard definition channels 14, 15 and 16; high-definition channels 798, 799 and 859; or check local television news.



Snow event reminders

Parking in a snow event

Did you know it takes our crew of 30 workers roughly 12 hours to clear all streets during an average 3- to 6-inch snowfall? Heavier or wetter snowfalls require even more time. In a snow event, high-volume roads are plowed first; residential streets and cul-de-sacs are next. If you are parking on the street during a snow event, try not to park directly across from another vehicle. Cars parked on both sides can make the roadway too narrow for plows to get through.

Parking in a snow emergency

The city may declare snow emergencies for major snow events based on the amount of snow, type of snow and existing conditions. Vehicles must be parked off the street until the city provides notification that the snow emergency has ended. Vehicles that aren't moved may be ticketed and towed. Some streets are exempt. Find more details at www.stlouisparkmn.gov/snow.

Shoveling after a snowfall

Remember to shovel sidewalks adjacent to your home after a snowfall. Snow must be removed the same day if there are six or more hours of daylight following the snowfall or by noon the following day. Sidewalks in front of apartments or commercial buildings must be cleared within four hours once the snow has stopped falling or by the beginning of business hours the next day. If you have neighbors who are unable to shovel their own sidewalks, please consider helping them out.



Upcoming events

Free Christmas tree collection Jan. 5 – 23

Christmas trees can be set out for collection on your regular collection day by 7 a.m. from Jan. 5 – 23 for no charge. Residents who set trees out after the free collection period will be charged for bulk pickup. Bagged trees won't be collected. Remove all decorations, and make sure your tree is not stuck in ice or snow before collection. For more details, including options for residents without city collection service, visit www.stlouisparkmn.gov/garbage-recycling.

Become a Recycling Champion

Join fellow community members and inspire others to reduce, reuse and recycle as a St. Louis Park Recycling Champion! The city will be holding its next Recycling Champions training Jan. 27 from 4 – 6 p.m. at the Municipal Service Center, 7305 Oxford St. In this two-hour class, participants will learn waste sorting best practices and get their questions answered. Once the training is complete, participants serve as ambassadors in the community and share what they learn with family, friends and neighbors. This might include helping a neighbor understand what can and can't go in their recycling or volunteering at an event to help attendees properly sort recyclables.

RSVP to recycling@stlouisparkmn.gov or call 952.924.2187 by Friday, Jan. 23. Include your name, email, phone number and neighborhood in your email or voice message.

Visit www.stlouisparkmn.gov/recycling-champions to learn more.

Annual tree sale starts in March

Help increase our city's tree canopy by adding trees to your landscape!

Starting March 1, visit slp-tree-sale.myshopify.com to order and pay for your trees as part of the city's annual tree sale. Trees are \$35 each; a maximum of three trees per property may be purchased. A preview of this year's available trees will begin mid-February on Tree Trust's website. Tree sale pickup will be Saturday, May 2, 8 a.m. – noon or Monday, May 4, 5 – 7 p.m. at the Municipal Service Center, 7305 Oxford St.

Need a new tree but not ready to plant it yourself? You're in luck! The city offers a full-service tree sale option where the city covers a portion of the planting costs. Total cost can be as low as \$35 depending on your location in the city or income level. There are also discounts for those who have had an ash tree removed due to emerald ash borer, but do not qualify on location or income level.

Visit treecanopyslp.myshopify.com to find out more and reserve your tree.

Low-waste celebration tips

Low-waste celebrations start in the kitchen. Reduce food waste (and save time and money) by shopping with a list, preparing just the right amount and inviting guests to bring reusable containers for leftovers.

Skip the disposables this year. As a host, borrow serving utensils from your guests. As a guest, offer to help the host with dishes.

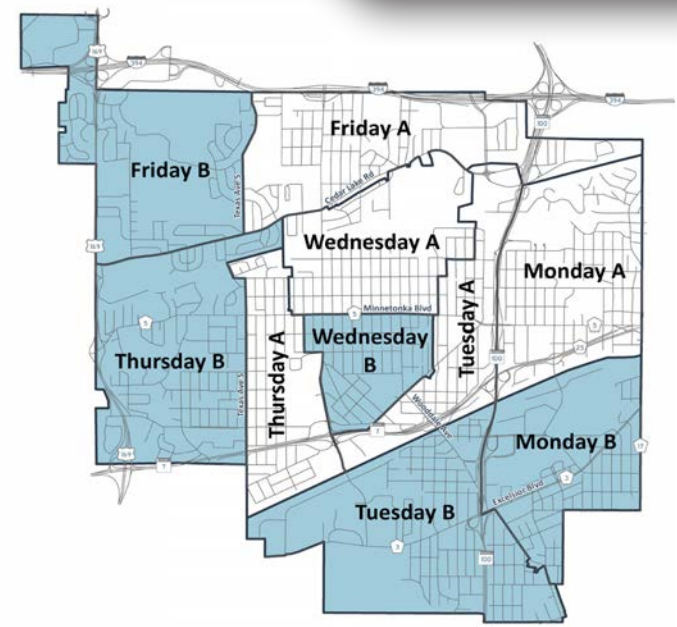
Reimagine gifting this year. Give the gift of your time or talents with homemade gifts, or share experiences like shows, classes or museum passes. Discover a preloved gift at secondhand stores, and check out the Choose to Reuse guide from Hennepin County for more low-waste gifting ideas at www.hennepin.us/choose-to-reuse.

December 2025						
Su	M	Tu	W	Th	F	Sa
	1	2	3	4	5	6
7	8	9	10	11	12	13
14	15	16	17	18	19	20
21	22	23	24	25	26	27
28	29	30	31			

January 2026						
Su	M	Tu	W	Th	F	Sa
			1	2	3	
4	5	6	7	8	9	10
11	12	13	14	15	16	17
18	19	20	21	22	23	24
25	26	27	28	29	30	31

February 2026						
Su	M	Tu	W	Th	F	Sa
1	2	3	4	5	6	7
8	9	10	11	12	13	14
15	16	17	18	19	20	21
22	23	24	25	26	27	28

March 2026						
Su	M	Tu	W	Th	F	Sa
1	2	3	4	5	6	7
8	9	10	11	12	13	14
15	16	17	18	19	20	21
22	23	24	25	26	27	28
29	30	31				

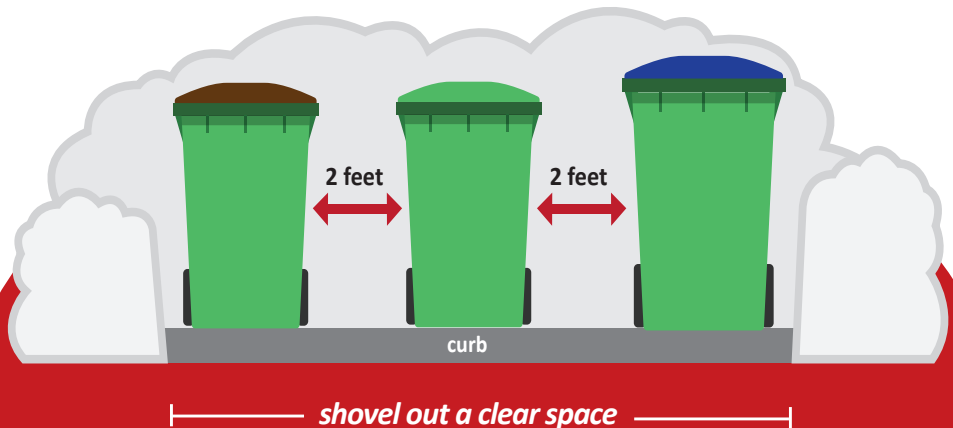


Know your recycling day

For your convenience, the next four months of the recycling schedule are provided above. Visit www.stlouisparkmn.gov/recycling to download a yearly calendar, find your collection day or sign up for email reminders.

- If your normal service falls on or after a holiday, you will receive service one day later.
- Report missed pickups within two days of collection day to:
 - Garbage/recycling:** 952.226.6457, SLP@buckinghamcompanies.com
 - Organics:** 952.941.5174, SLP@republicservices.com
 - Yard waste:** 612.405.9579, SLP@wastecontainersystems.com
- This calendar applies only to properties with city-provided recycling. Multifamily buildings are required to offer recycling to their tenants. Check with your building management or email city staff at recycling@stlouisparkmn.gov if you have questions about recycling collection at your building.

Collections are delayed one day all week after holidays that fall on a week day. Collections are not delayed for holidays that fall on weekends.



Setting out carts during winter months

During winter months, keep the area where you place your carts for collection clear of snow. This helps crews safely access your carts. Carts set on top of snowbanks or buried underneath will not be collected. Carts should not be placed in the streets, alleys or sidewalks any time of year, but especially during the winter months because they interfere with snow removal operations.

Setting out your carts for collection

Make sure your carts are out by 7 a.m. as collection times may vary.

- If you have curbside collection, place carts on your driveway or on the boulevard between the street and sidewalk. Ensure carts have at least 2 feet of space between them and surrounding objects.
- If you have alley collection, place carts on your property, driveway or beside your garage next to the alley. The 2-foot spacing noted above for curbside collection is not required for alleys.

CAN'T MISS WINTER EVENTS



All aboard: Holiday Train arrives Dec. 14!

View the city's social media pages for parking instructions. For more information about the Holiday Train and to view a full schedule, visit www.cpkcr.com/en/community/HolidayTrain.

NEW YEAR'S EVE SKATE

DEC. 31, 4 – 6 P.M., ROC, 3700 MONTEREY DRIVE

Before you go out for the night, come skate at the ROC with music and refreshments. Free to attend. Skate rentals available for \$3 per person. All ages welcome!



NATIONAL DAY OF RACIAL HEALING

JAN. 19, 4 – 7 P.M., WESTWOOD HILLS NATURE CENTER

The City of St. Louis Park, St. Louis Park Public Schools, St. Louis Park Community Education and Benilde-St. Margaret's are partnering to host the fourth annual National Day of Racial Healing event. This event is an opportunity for children, teens, neighbors and community members to learn about each other's diverse backgrounds, cultures, perspectives and lived experiences. All are invited to participate in the community conversation. The event is free to attend and will include soup and light refreshments. Preregistration is required at www.stlouisparkmn.gov/rec-registration.

Disco Ball Skate

DEC. 19, JAN. 23, FEB. 13 | 5:45 – 7:15 P.M.
ROC, 3700 Monterey Drive

Ice skate as a DJ spins tunes and lights up the ice! \$5 per person; ice skate rentals available for \$3 a pair.



NEW adult bowling league at Park Tavern

BOWLING LEAGUE AGES 21+
Park Tavern, 3401 Louisiana Ave. S.



Our new seven-week, co-rec bowling league is open to players of all abilities, from beginners to seasoned bowlers. Whether you're aiming for strikes or just there for the laughs, this league is all about having fun, improving your game and enjoying time with friends. Form a team of four and join us for great bowling, great company and weekly perks. Each night, your team will enjoy a pitcher of your favorite beverage and a large two-topping pizza, included in your registration fee. Bowling shoes and balls are provided. Learn more and register your team of four players at www.stlouisparkmn.gov/rec-registration.

BE THE LIGHT WINTER SOLSTICE WALK

SUNDAY, DEC. 21, 6 – 8:30 P.M.
WESTWOOD HILLS NATURE CENTER

Join us on the shortest day of the year to remember that many in our community aren't able to "see the light" because of struggles with mental illness or difficult situations. Create a luminary with your own message to take home and light your neighborhood. Activities ongoing. Preregistration required at www.stlouisparkmn.gov/rec-registration.



New Year's Gnome

Each week in January, a different New Year's gnome will be placed in one of the city's parks. Once a gnome is placed in a park, it will remain there until the end of January. We will give out clues to help locate the different gnomes each week on Tuesday mornings through Facebook and Instagram (@stlouispark), as well as govDelivery emails. It is said that those who snap a photo with one of the New Year's gnomes will have some of its good luck transferred to them! Share your photos with us through social media by posting them in the comments section of our weekly clue posts.



BundledUp!

JAN. 24, NOON – 3:30 P.M.
Oak Hill Park, 3201 Rhode Island Ave. S.

Outdoor winter fun for all ages! Activities include (subject to change):

- Bonfires • Cross-country skiing
- Sledding • Sleigh rides • Snowman building contest • Snowshoeing • Cocoa
- S'mores • Music • Raffle for prizes



St. Louis Park MINNESOTA

St. Louis Park Rotary Club

ShamROC Ice Bowling

MARCH 14, 1 – 5 P.M. ROC, 3700 MONTEREY DRIVE

Have you ever wondered what it's like to bowl on ice? You're in luck! Sign up for the annual ShamROC Ice Bowling event! Bowl four frames to win fabulous prizes and stay for the food, drinks, music and fun. Register your team of four and secure your time slot. For rules, registration and more information, visit www.shamroceicebowling.com.



Other winter events and activities:

Walk the Park on the second Saturday of every month, youth and adult sport leagues, adult fitness classes, creative youth programs, Westwood Hills Nature Center winter camps and more!

Visit www.stlouisparkmn.gov/events or scan the QR code for more details on city events and activities or to sign up for updates.