



St. Louis Park City Council

Monday, April 20, 2026



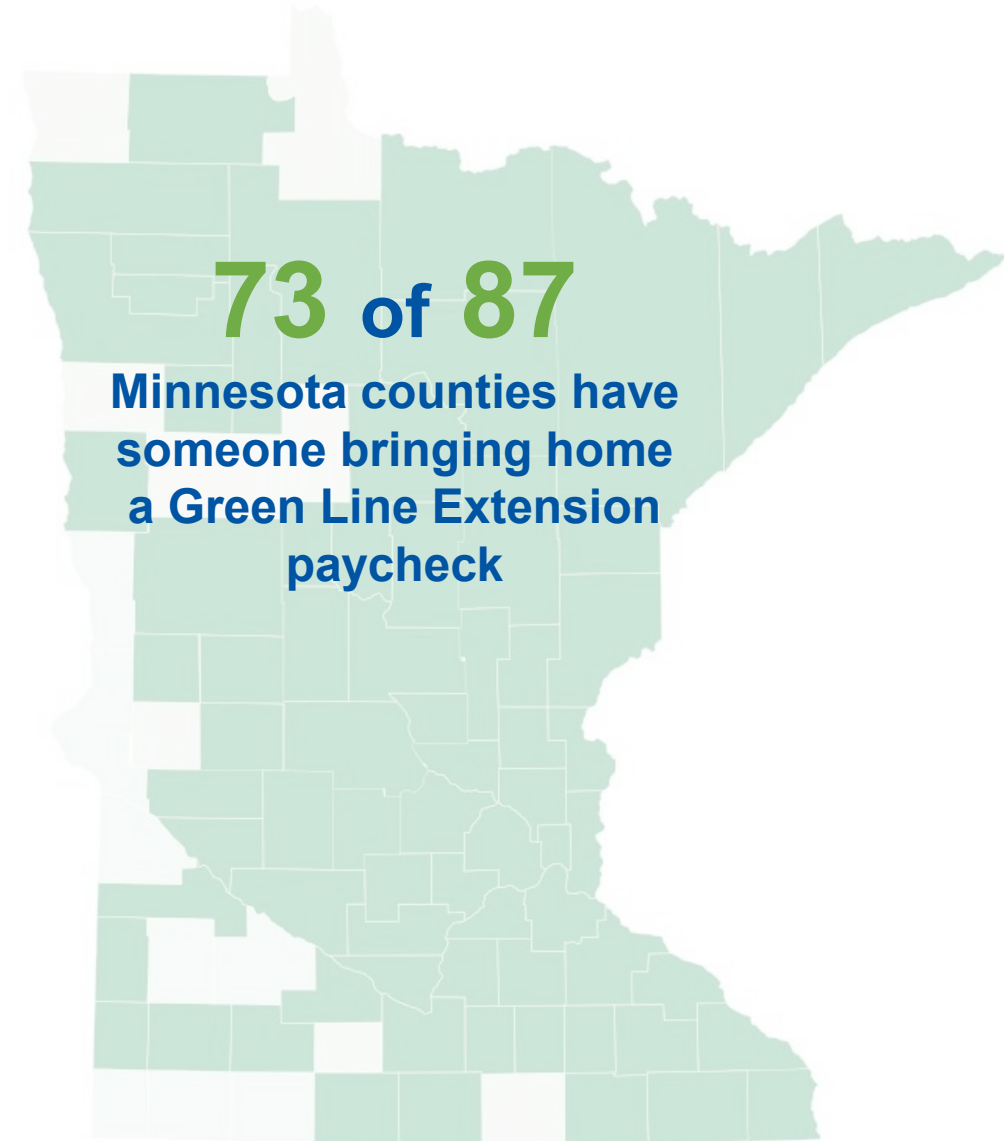
Today's topics

- Green Line Extension Project Overview
- Systems Integration Testing
- Public Involvement



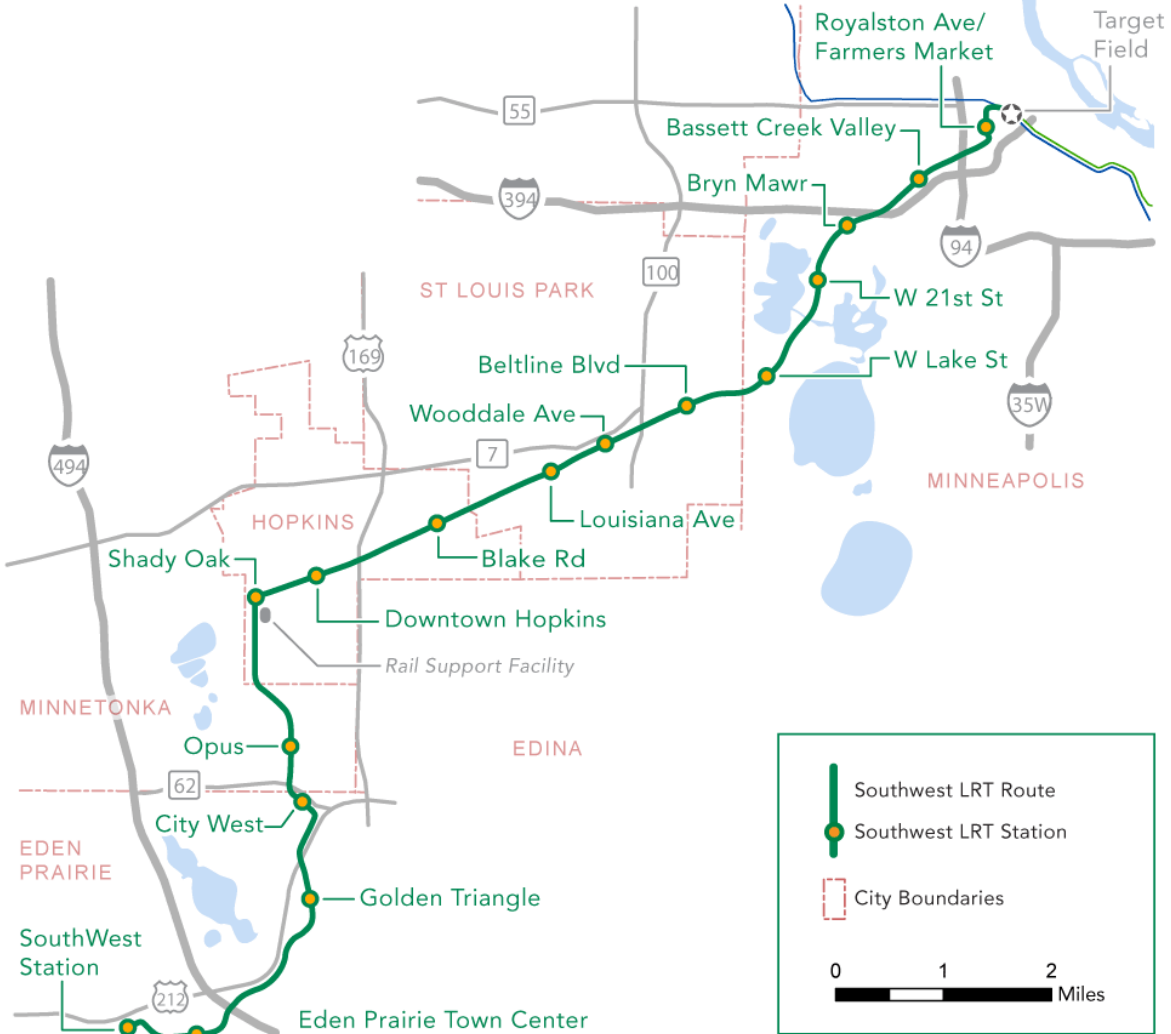
Construction workers

- Putting people to work:
 - 5,561 individuals working on the project through March 2026
 - 4,469 reside in Minnesota
 - Employing folks from 84% of counties statewide
 - Project reinvesting in communities throughout the Twin Cities and State



Green Line Extension Project

- Overall Project: 95% complete
 - Civil Construction: 99% complete
 - Systems Construction: 91% complete
 - Hopkins Rail Support Facility: 82% complete



May 2018

Development 2011-2024

- Over \$3.3 billion in planned and permitted development along Green Line Extension corridor
- In St. Louis Park
 - \$252 million in Non-Residential Permit Value
 - \$257 million in Multifamily Residential Permit Value
 - 1,480 new multifamily units permitted



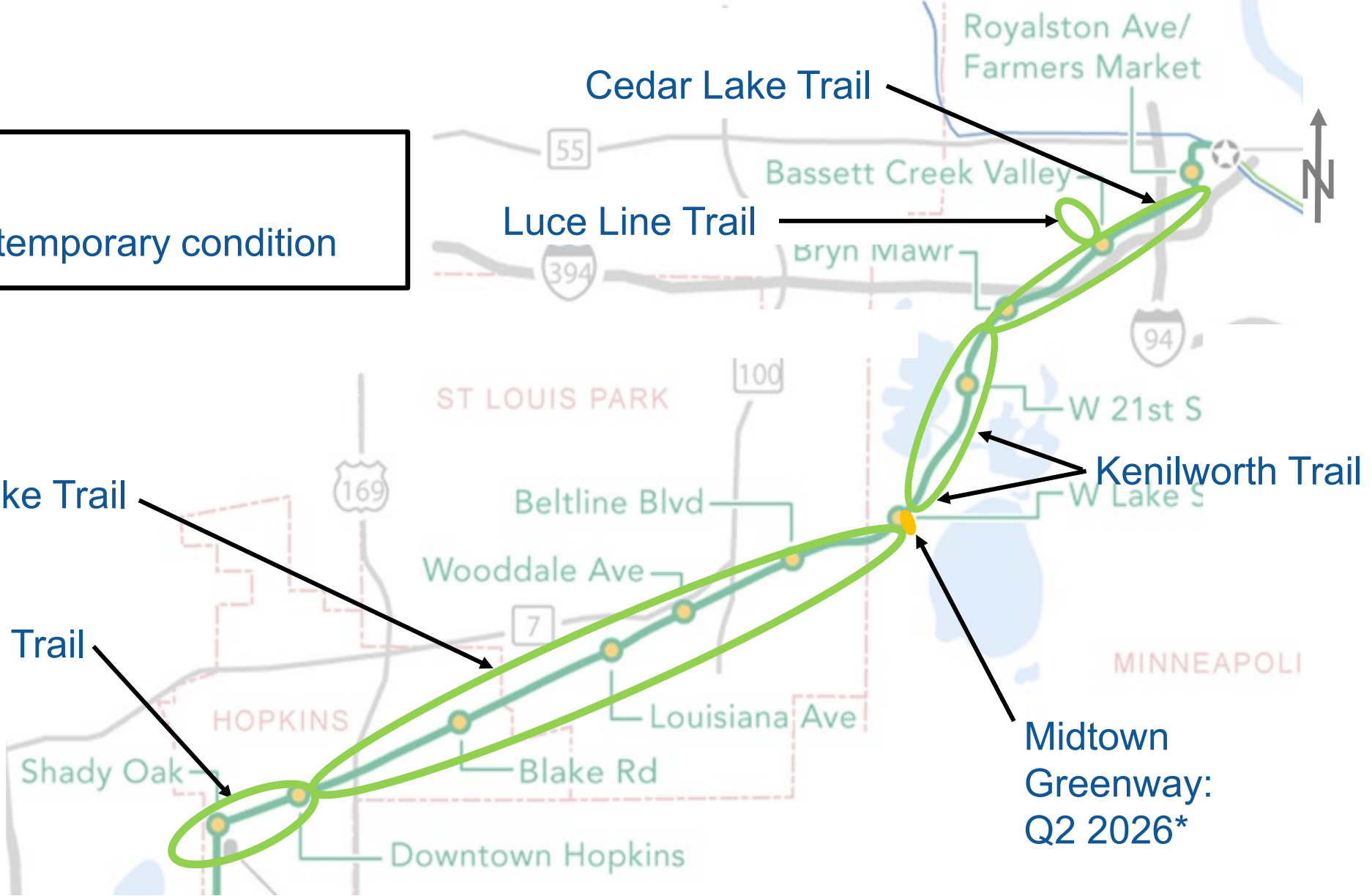
Corsa, adjacent to Beltline Blvd Station

For more information, visit Metro Transit's TOD Studies and Projects page:

<https://www.metrotransit.org/tod-studies-and-projects>

Trails

	Open
	Currently open: temporary condition



*This segment will continue to have a short-term bypass through Q2 2026 to allow construction access to a Tunnel Systems House located adjacent to the Greenway.

Stations – St. Louis Park



Wooddale Avenue



Louisiana Avenue



Beltline
Boulevard

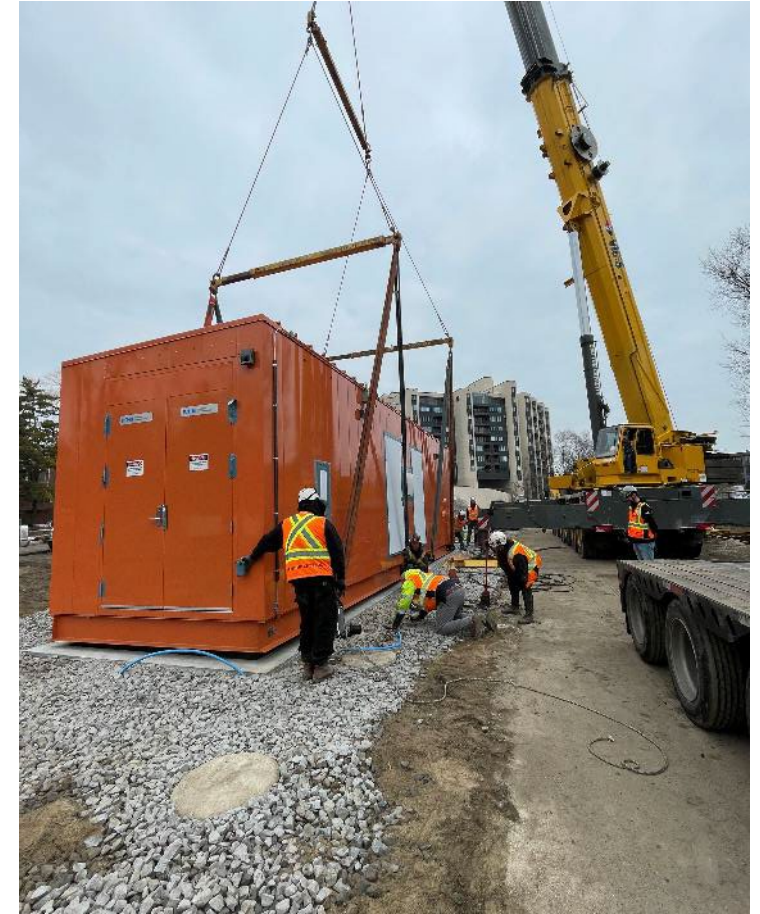
2026 Systems Construction



Setting of final traction power substation, Minneapolis



Final Overhead Contact System poles set, Minneapolis



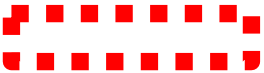


Setting of Kenilworth tunnel systems house, Minneapolis

Public Safety Agency Familiarization Event (Feb 20, 2026)

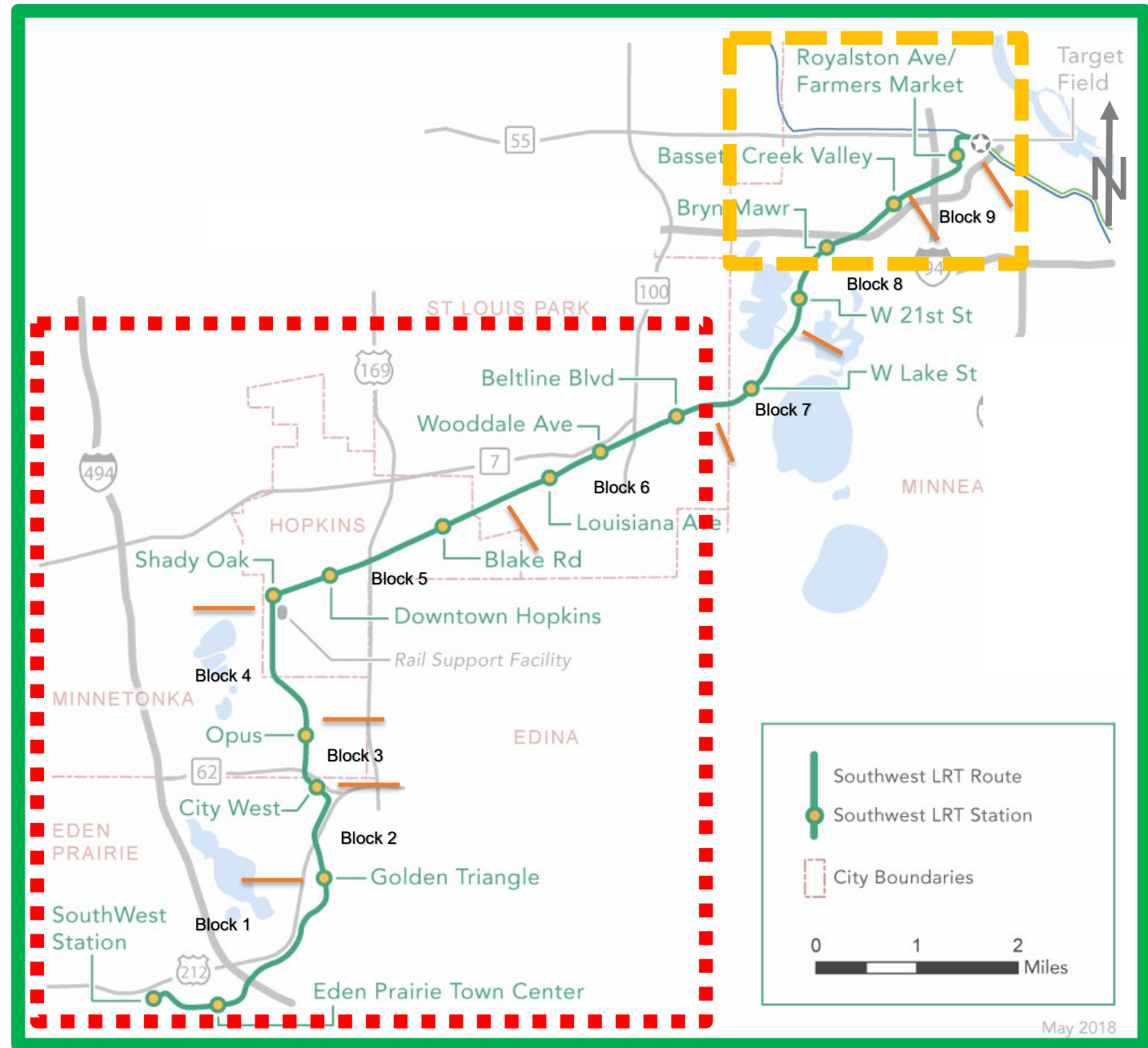


Systems Integration Testing

Systems Integration Testing

	Phase 1	July 2025 – June 2026
	Phase 2	Q3 2026
	Phase 3	Q4 2026

- Systems Integration Testing (SIT) led by GLE systems contractor
- Once SIT is complete, system turned over to Metro Transit for further testing and training before revenue operations begin in 2027



Signal system testing near Louisiana Avenue



Louisiana Avenue Station – signal system and grade crossing activation testing



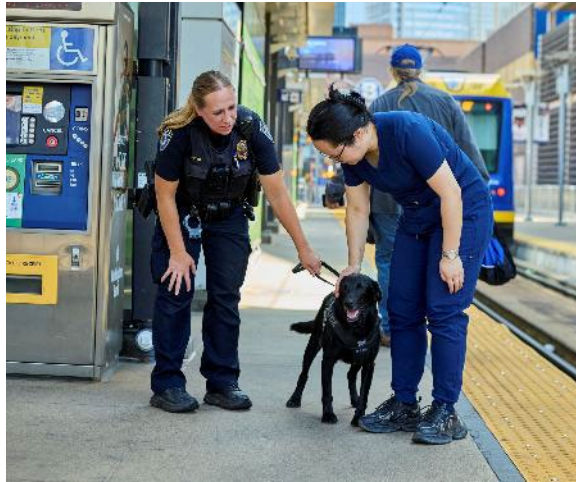
Public Involvement

Public Involvement - Outreach and Communication in 2026



Systems Testing/ Rail Activation

Creative targeting to youth including coordination with schools, Operation Lifesaver for rail crossing safety



Safety and Security Preparedness

Community familiarization with Metro Transit Police Department at events, public meetings



Construction Completion

Support the closeout of Civil and Systems construction as well as the Kenilworth Landscape and Hopkins Rail Support Facility contracts



How to Ride

Educate and generate interest in new customers about how to use the Metro Transit system

★ Community-based organizations will help reach targeted audiences with whom they have strong connections

Open Trails to the Rails Event – May 9, 2026



- Ribbon-cutting and speaking program at West Lake Street Station at 11:00 AM
- Community events along the trail 12:00 – 2:00 PM
- Louisiana Avenue Station will feature City of St Louis Park, Loffler Companies, Hamer's Cycling Service, local face painter



www.metrotransit.org/open-trails

Thank You

MORE INFORMATION

Website: GreenLineExt.org

Email: swlrt@metrotransit.org

Instagram: [@GreenLineExtMN](https://www.instagram.com/GreenLineExtMN)